

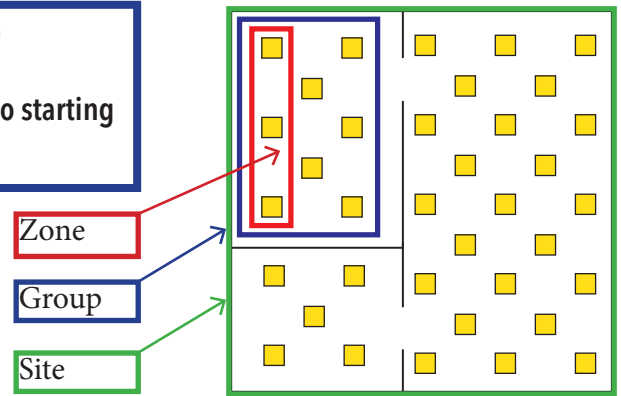
# nLight AIR Quick Start Guide

## The 5 C's of nLight AIR Installation and Startup

### Construction

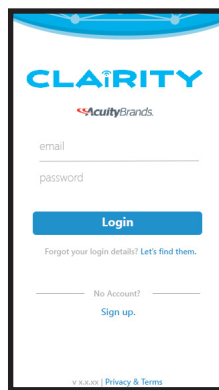
Install and energize the nLight AIR devices (fixtures and wall switches)

Note: at least one group of nLight AIR devices must be installed prior to starting the Configure step.

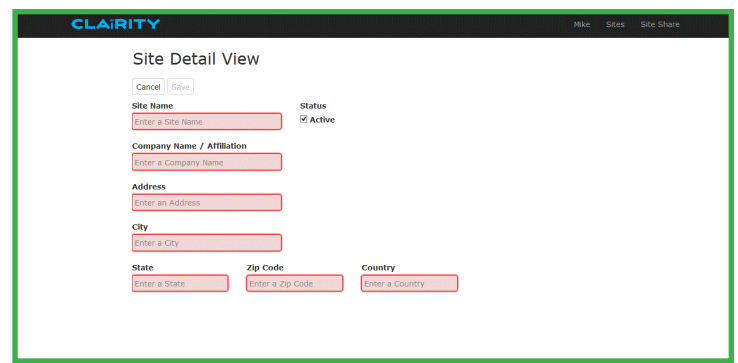


### Create

For new users, use the Clarity™ mobile app to create a User ID (email address) and password. Then, create your site (ie. Project) at [air.acuitynext.com](http://air.acuitynext.com). This may be completed before installation of the devices. It is recommended that you share the site with others so they may assist with the onsite startup, on going maintenance or future re-purposing. (see Collaborate on next page)



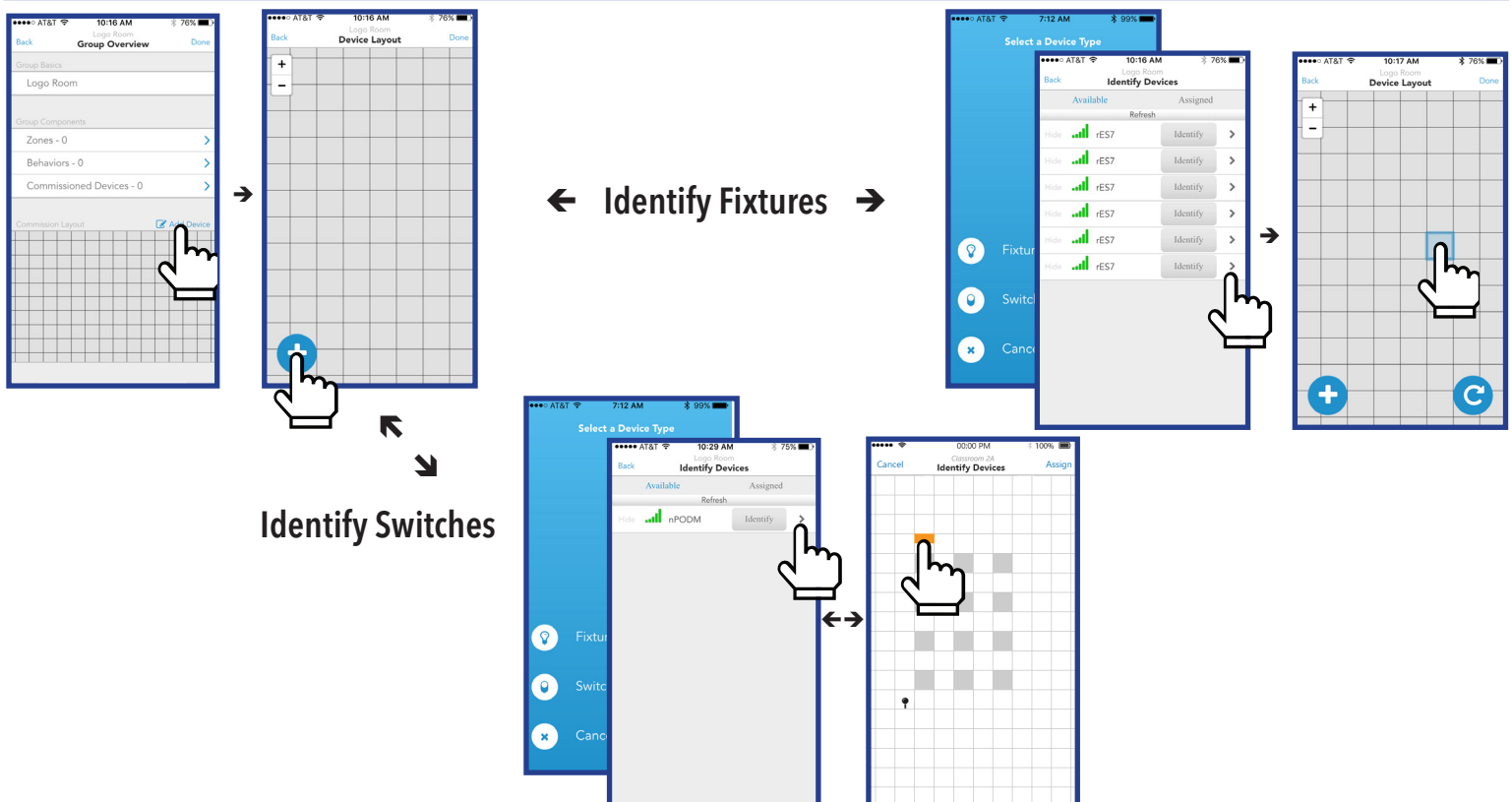
Create a login



Create a site

### Configure

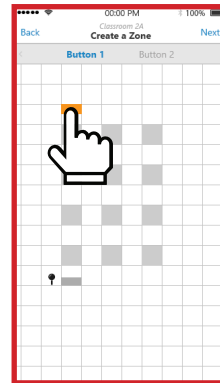
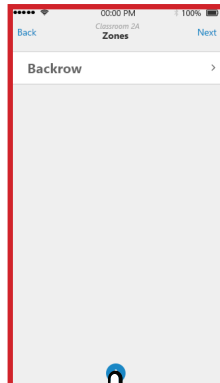
Use the Clarity mobile app to identify a group of fixtures and wall switches and place them on the grid.



## Customize

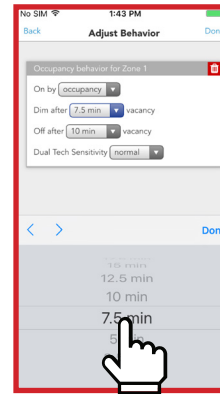
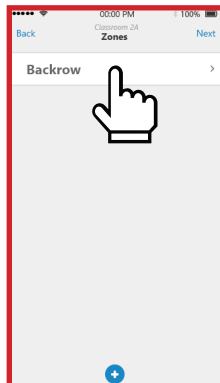
Use the Clarity mobile app to create **zones** of control and define behaviors for each.

Note: Each device can be in one or more **zones**



Create **zones**

Add devices to a **zone**, name the **zone**, and select done.



Define behavior

Select the **zone**

Define behaviors and select done

## Collaborate

Use [air.acuitynext.com](http://air.acuitynext.com) to share your site with your customer or colleagues. You may share the site with the end user for their ongoing maintenance or with colleagues so they may assist with ongoing support. Choose sites in the header, select the site to share, and add users to receive access.